



Rural Pact in Finland

Marianne Selkäinaho

Ministry of Agriculture and Forestry, Finland

Rural Vision and Rural Pact in Finland

- National Rural Policy in Finland
- Island Policy in Finland
- Rural Proofing in Finland

- CAP-plan: Rural Development
 - Measures that implement Rural Vision and Rural Pact
 - A(R)KIS

- National Rural Network (CAP)
- Finland's Village Association



Finnish National Rural Policy in a nutshell

- **Everyone** who makes decisions or is involved in the preparation of decisions that affects the conditions of daily life and entrepreneurship in rural areas **is engaged in rural policy**.
- **Good rural policy requires the recognition of the diversity of rural areas.** Rural areas are a mosaic of different areas, places, environments and communities – not only regions or municipalities but *villages and peoples!*
- **Comprehensive rural policy programme**, current 2021-2027 is 7th in order
- **Cross-sectoral and -administrative Rural Policy Council**, its Secretariat, thematic networks (4), thematic groups (4) supports the Government in the preparation and implementation of national rural policy issues that are cross-administrative and strategically important, produces information and tools through *R&D* and **promotes dialogue between different actors and sectors**.
 - **34 organisations** (8 ministries, 24 Umbrella Organizations including municipalities, research, business organisations and civil society NGO's, 3 Regional State Authority entities)
 - Current council appointed by the Government until 31.12.2025. with six (6) tasks.



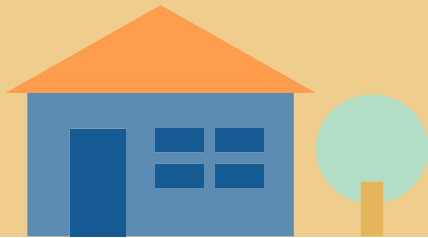
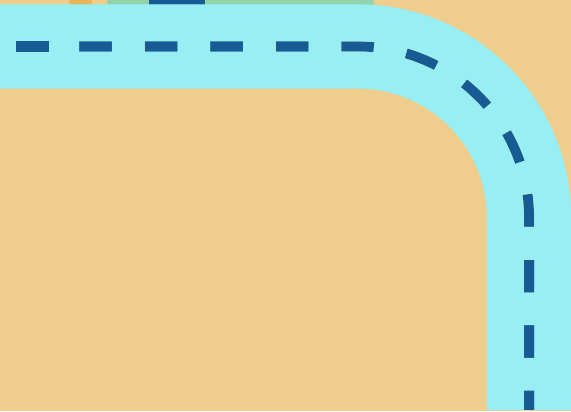
RURAL POLICY COUNCIL
RURALPOLICY.FI

Island policy in Finland

- Island Committee is a **permanent parliamentary advisory board** appointed by the Government.
- The activities are based on the Island Act and the Decree on the Island Committee
- **The advisory board participates in the development of island areas together with central government authorities with counties, municipalities and other parties.**
- The Advisory Board has its own Secretariat consisting of representatives from ministries, regional councils, municipalities and archipelago legislation
- Island Committee plays a **key role in advancing and developing island issues**, both in recognizing the special characteristics of archipelago and river basin areas in decision-making and in its different processes.
- <https://www.islandpolicy.fi/>



Rural Proofing in Finland



Perspectives

Rural areas cover **95 %** of the country.

68 % of land area SPA:s, with
approx. **1,8 pers./km²**

Population in rural areas approx. **28%**
(1,5 milj.)

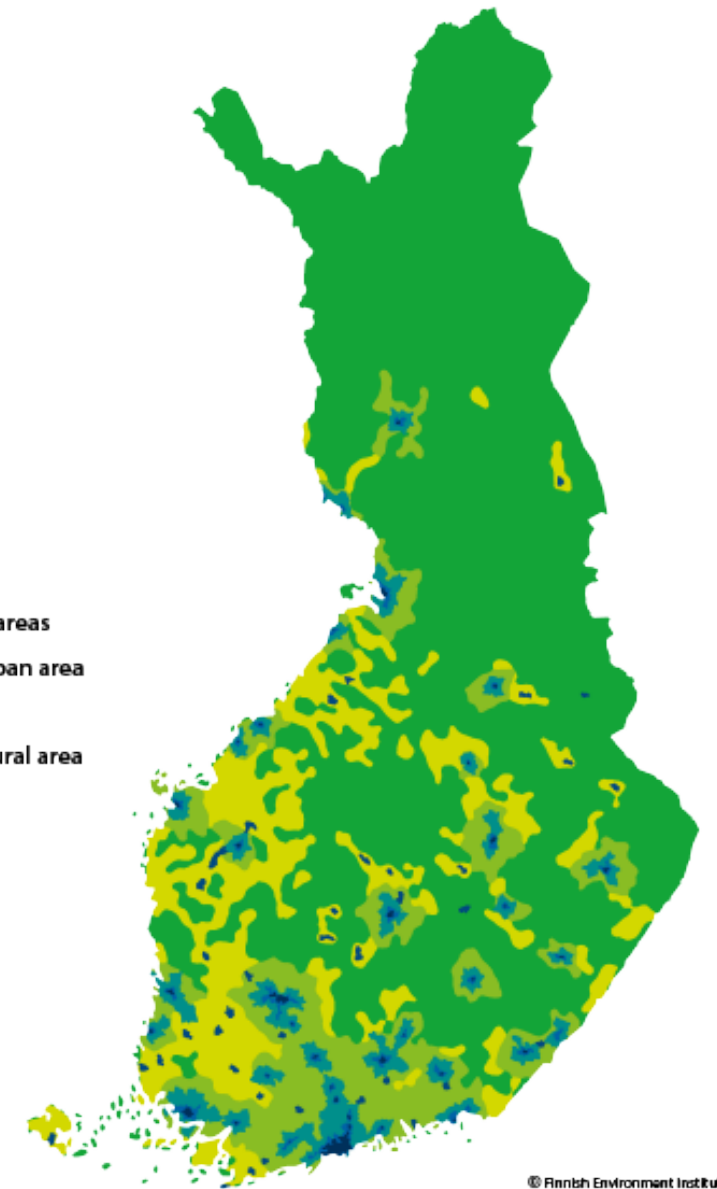
Part-time residents up to **2,9 milj.**
(*multilocal residency prevalent*)

Of all SME:s approx. **40 %** in rural areas

Villages: **>4000**
Municipalities: **309**
Wellbeing Counties: **21**
Regions: **18**

Decentralised community structure.

- Inner urban area
- Outer urban area
- Peri-urban area
- Local centres in rural areas
- Rural area close to urban area
- Rural heartland area
- Sparsely populated rural area



© Finnish Environment Institute

Rural Proofing in Finland

- Rural Proofing is a systematic and flexible tool that helps make better decisions and ensures that no time is spent on corrective movements afterwards.
- The Rural impact assessment method combines **research data, cross-administrative cooperation and inclusive process.**
- **Research and development work** has been carried out in close cooperation **since 2007** with the Association of Finnish local and Regional authorities.
- Rural impacts can be assessed **as a separate process** or **as part of other assessments.** The method can be used to take into account snowball effects, i.e. impacts on other services and functions, such as security of supply and comprehensive security. The method can be taken into use in its entirety or suitable parts can be selected from it.
- **Guidelines** from Ministry of Agriculture and Forestry in 2022
 - Piloted in national regulation for rural development of CAP in 2022

Rural proofing of legislative proposals, Guidelines for law drafters for rural proofing

- Guidelines aim to support law drafter in the use of the method for rural proofing.
- It includes information about the method, of rural areas as areas of assessment of evaluation themes and **tools for carrying out the evaluation**
- Guidelines will be published in English summer 2023

Rural Impact Assessment method

1. A clear **objective** and mandate, division of duties and responsibility.
2. **Checklist:** review as part of official duties and/or expert in the group: What kind of impacts identifying by means of a checklist? NB. geographic information and rural research.
3. **Expert group working**, spatial data analysis, survey, (hearing, request for comments).
4. **Inclusive workshop:** What could be hidden, remaining and probable impacts? Deepening discussions and finding solutions.
5. **Presentation of results and monitoring**, in which case the process can be repeated.

Added value information linked to Rural Pact

- **The Rural Review:** a unique *information package* on Finnish rural areas. The review is published every three years. It presents a cross-section of the rural situation. The review is a compact information package on the national development of rural areas in the light of statistics and studies. (Rural Policy Council)
- **The Rural Barometer:** The purpose of the Rural Barometer is to shed light on *the rural perception* of Finnish citizens, public sector decision-makers, business decision-makers, the media and rural experts. (Rural Policy Council)
- **The Rural Indicators:** The service is intended for monitoring regional development and comparing regions, as a tool for decision-making, for assessing the impacts of development measures, for research use and for monitoring rural development. The service contains *data on the population and migration, economic structure and activities, living conditions and well-being as well as the environment*. Most of the data are annual time series starting from 1988. (Statistics Finland/Ministry of Agriculture and Forestry)

CAP-plan 2023-2027, Rural Funding



CAP (EAFRD) as a tool for Rural Pact

- Measures linked to EU's Long term vision for Rural Areas:
 - **Broadband** investments in Rural Areas
 - Co-operation measures: **Socio-economic development** (Cooperation measures to develop the socio-economic structure)
 - **Smart Villages** -measure
 - Non-profit **investments** (for environment, climate, rural services)
 - **Business** investments, Business Development in rural areas
 - **Leader**

Smart Villages

- **The own measure** for Smart Villages in FI CAP-plan
- The model little bit same than in EIP-projects (European Innovation Partnership)
- At least 2 communities working together **to solve a challenge that is based on place based targets.**
- Renewal, new solutions, bold experiments, new partnerships, networking at the regional, national and international level.
- Aid may be up to 100% of the eligible costs.
- Multi-year projects, planned activities and concrete measures, separate investments



The scope of the potential support for Smart Villages in Finland

- There is no intention to produce an overarching national strategy.
- The aim is to be able to respond in a fast and flexible manner to **the needs expressed by local communities** in the following fields, for example using **digitalization** as a tool or as a helper:
 - **Social** – innovations to ensure sustainable and good quality of social and cultural services. Also, investments in skills for the future, support for urban-rural linkages and sustainable wellbeing: preventing segregation and inequality between people, improve integration of immigrants and other new comers, sense of community, living conditions, culture, safety, improving rural know-how, and accessing the “hidden” knowledge of rural communities
 - **Environmental** – innovations to improve resource efficiency, create local energy communities, reduce the carbon footprint, enhance biodiversity, both protect and valorise environmental assets. Encouraging municipal authorities, business representatives, local residents, research institutes and experts to work together to devise and tailor new cost-effective solutions to reduce emissions, especially in the contexts of transportation and mobility, housing and food. Low carbon villages: circular economy, sustainable food production and local food
 - **Economic** innovations and actions to support (business development in) emerging value chains and local economic clusters (both agricultural and non-agricultural) based on local assets and (potential) areas of comparative advantage (bioeconomy, smart tourist destinations, etc.). Smart transport and logistic solutions, smart local services and service chains and smart food chains, digitalization and co-operation of enterprises. Connectivity (broadband) and different models for businesses (for example social entrepreneurship).

Other important Actors

- **National Rural Network** (CAP-network)
 - Co-ordination of smart villages actions
- The Finnish NRN is an active part in smart village process in Finland.
- The Finnish NRN has been and will be very active in the EU's CAP Network and its thematic groups.
- The NRN in cooperation with the smart village thematic group organised the '**Smartest Village Competition**' in Finland. The aim of the competition was to find "the smartest village" that is able to take their intelligent, out-of-the-box thinking to the furthest.
- <https://maaseutuverkosto.fi/en/>
- **The Finnish villages Association** brings together local developers in Finland under one umbrella.
- It represents some 4,000 **village associations and committees**, 19 **regional village associations**, 54 regional leader groups, and a growing number of village associations and district associations at municipal level.
- Since 1997
- <https://suomenkylat.fi/> (in Finnish at this point)



rural·fi



Co-funded by
the European Union